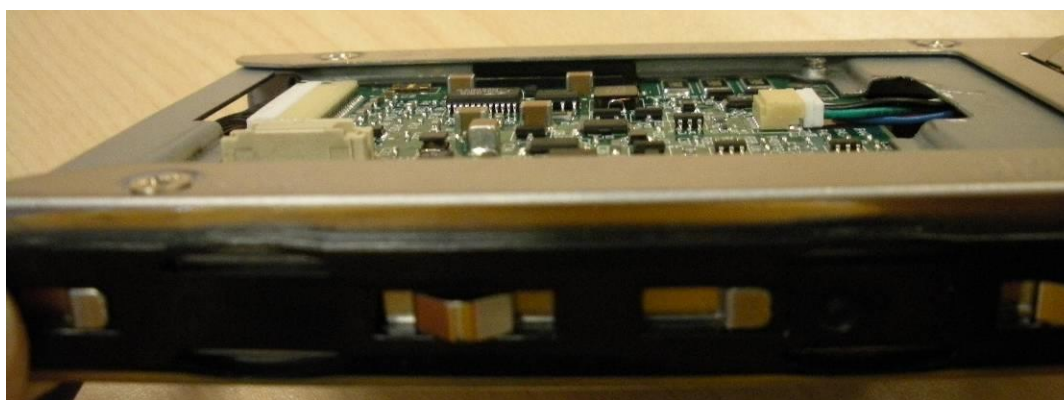
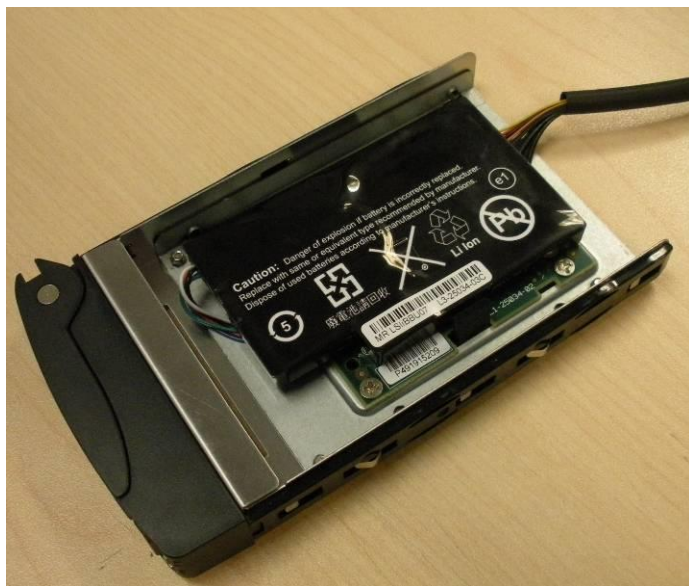


# Where to install BTR-0018L-kit BBU bracket

Update: 2010/05/26

## Install into How-swap 2.5" HDD tray:



Datacenter



Blade Server



Twin Architecture



GPU Solutions



Storage



Embedded

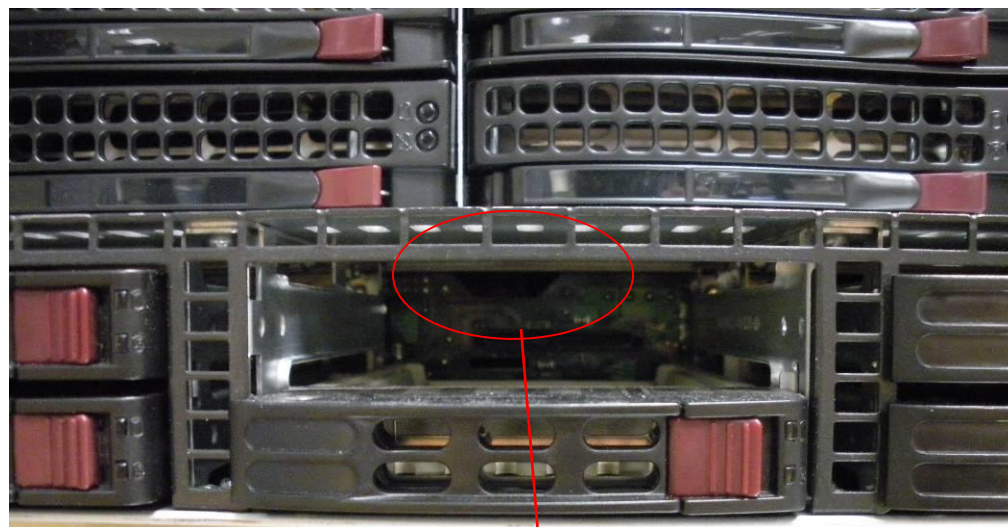


Switches

# Where to install BTR-0018L-kit BBU bracket

Update: 2010/05/26

**Install into 2.5" HDD tray:**



space for extension cable to go through



Datacenter



Blade Server



Twin Architecture



GPU Solutions



Storage



Embedded

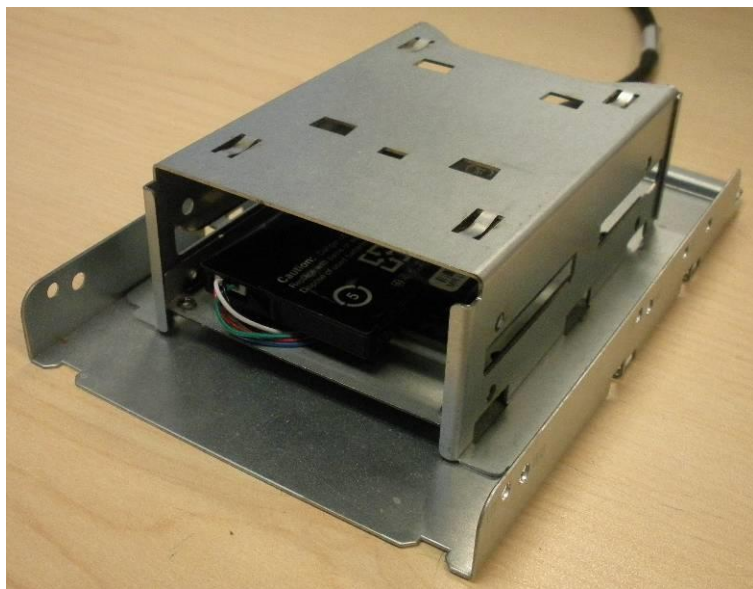


Switches

# Where to install BTR-0018L-kit BBU bracket

Update: 2010/05/26

**Install into internal fixed 2.5" HDD tray MCP-220-00044-0N or MCP-220-00051-0N:**



Datacenter



Blade Server



Twin Architecture



GPU Solutions



Storage



Embedded

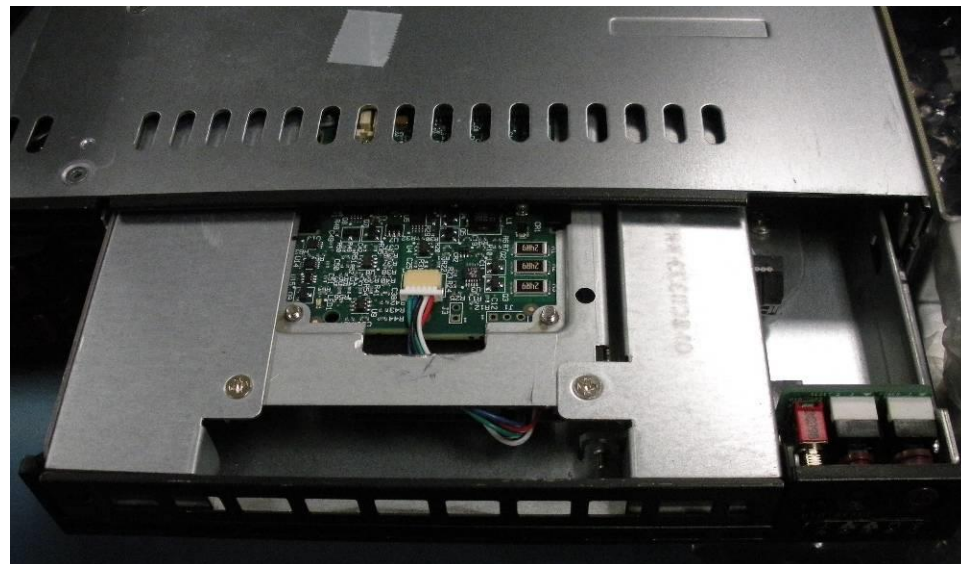


Switches

# Where to install BTR-0018L-kit BBU bracket

Update: 2010/05/26

**Install into DVD dummy tray MCP-290-00036-0B:**



Datacenter



Blade Server



Twin Architecture



GPU Solutions



Storage



Embedded

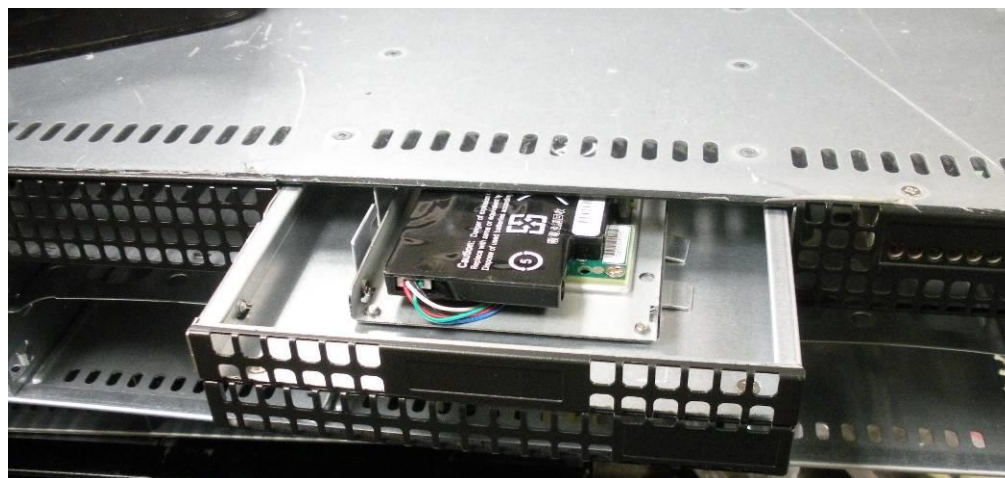
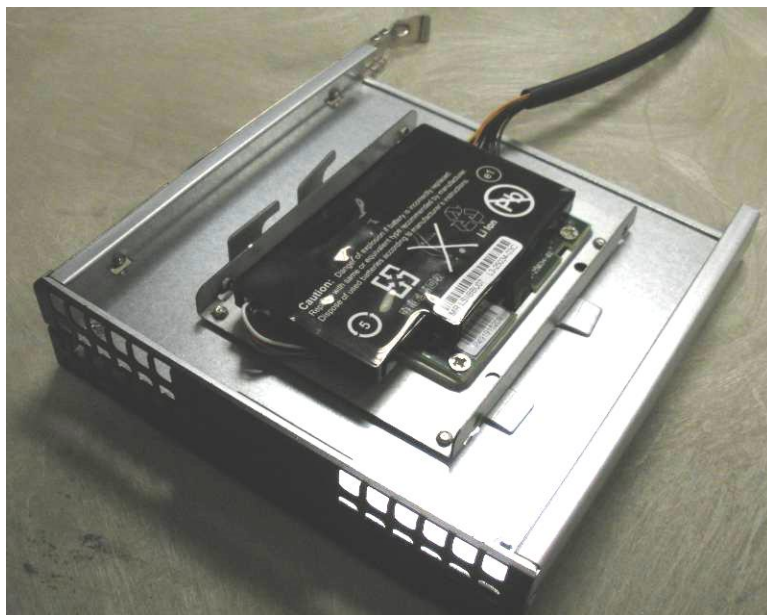


Switches

# Where to install BTR-0018L-kit BBU bracket

Update: 2010/05/26

**Install into USB/COM port dummy tray MCP-220-00023-01:**



Datacenter



Blade Server



Twin Architecture



GPU Solutions



Storage



Embedded

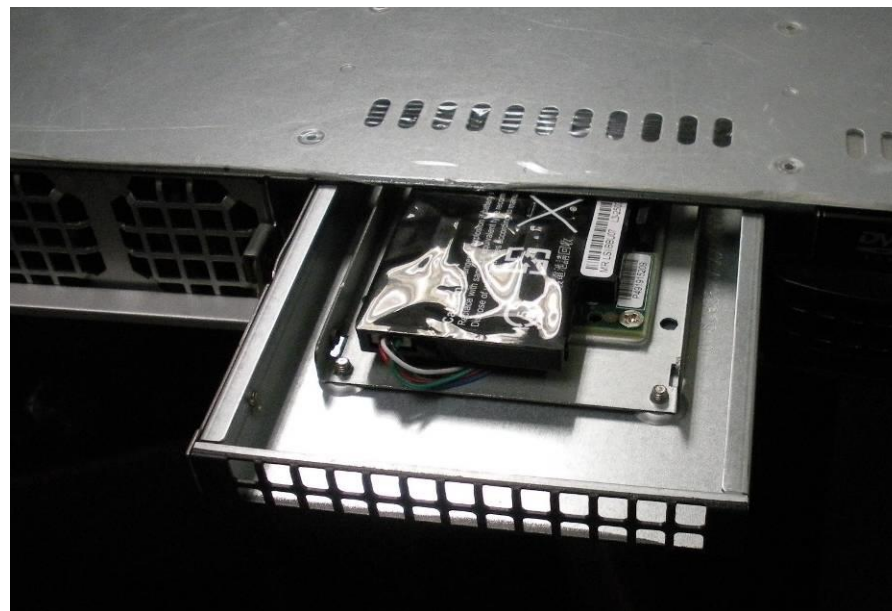
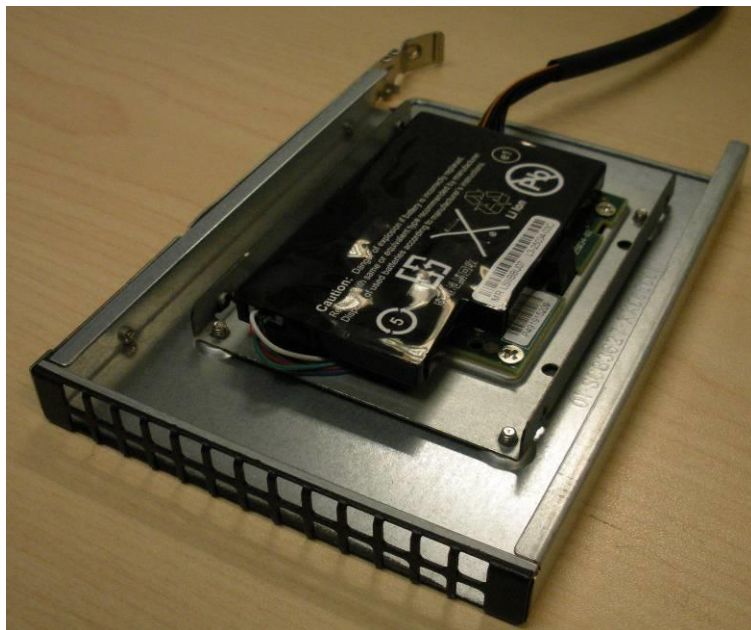


Switches

# Where to install BTR-0018L-kit BBU bracket

Update: 2010/05/26

**Install into slim FDD dummy tray MCP-220-83601-0B:**



Datacenter



Blade Server



Twin Architecture



GPU Solutions



Storage



Embedded



Switches